



# Portfolio

AYDA BAGHERI | Architectural Designer



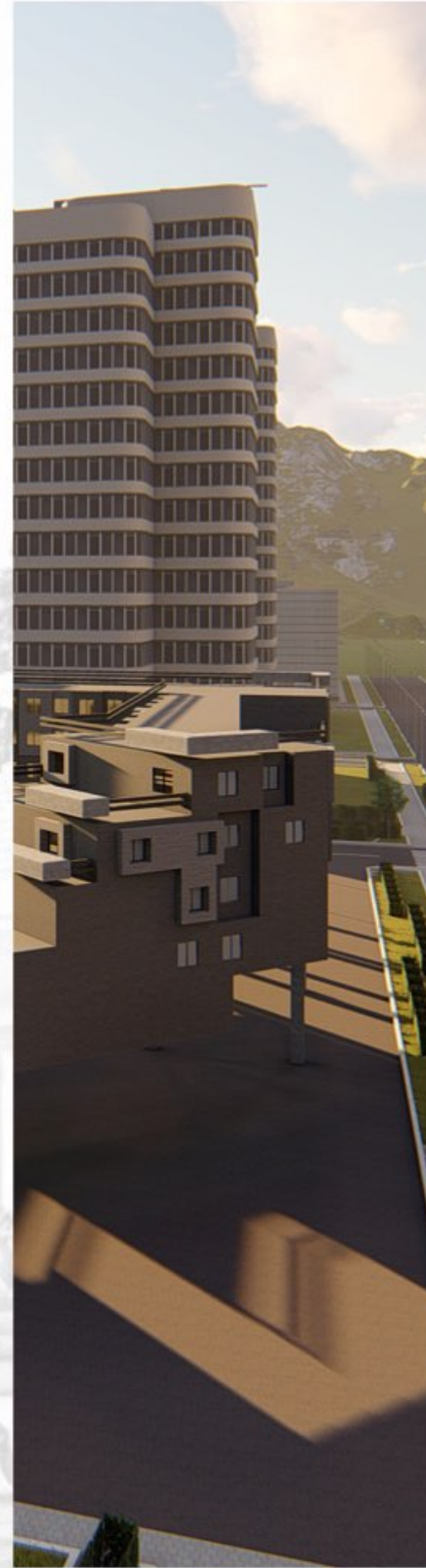
1

SKETCH DESIGN  
School Project



3

EDUCATION  
PROJECT  
University Project



5

THERAPEUTIC  
PROJECT  
University Project



7

RESIDENTIAL  
PROJECT  
University Project



9

3D MAX  
PROJECTS

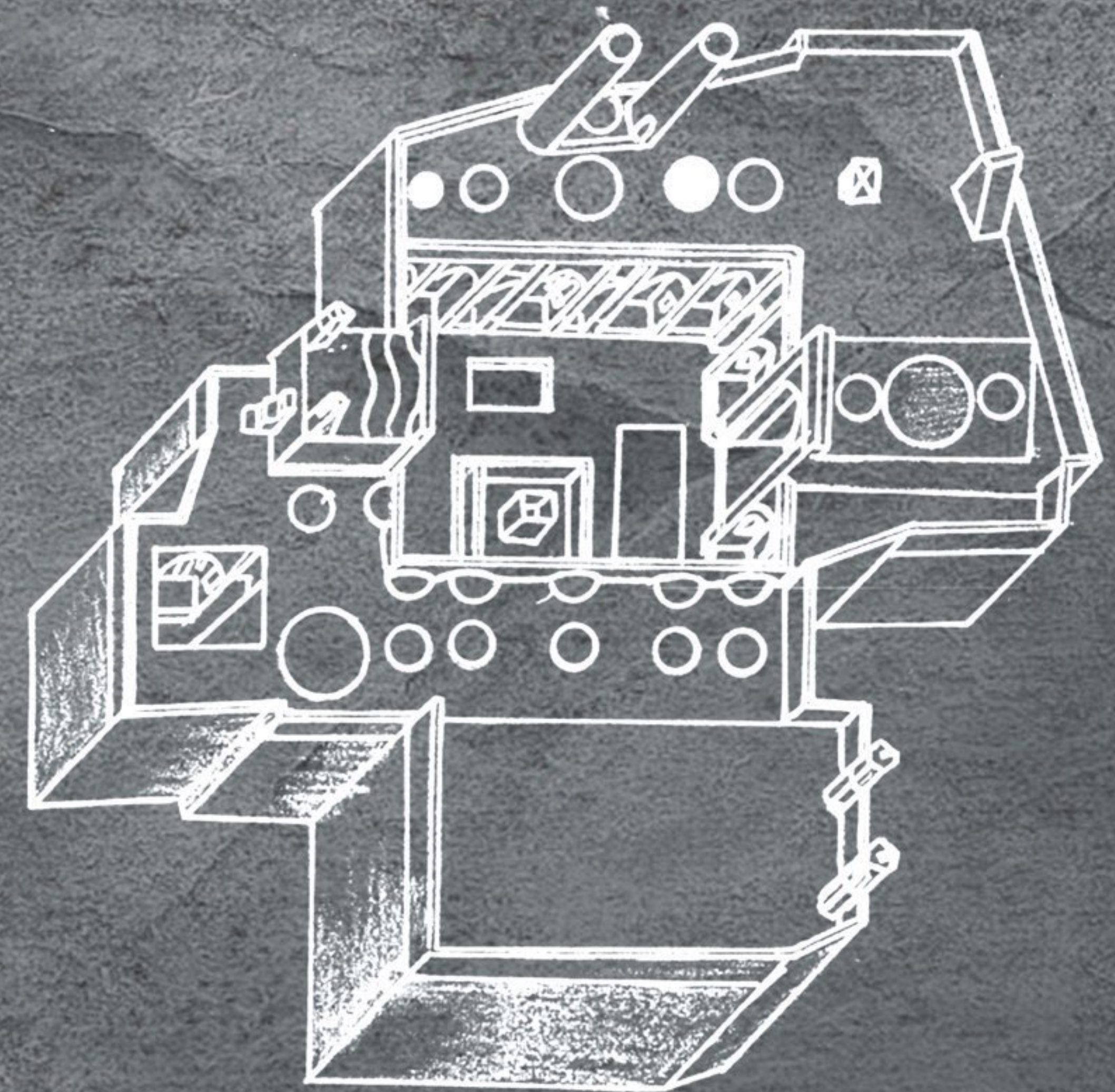
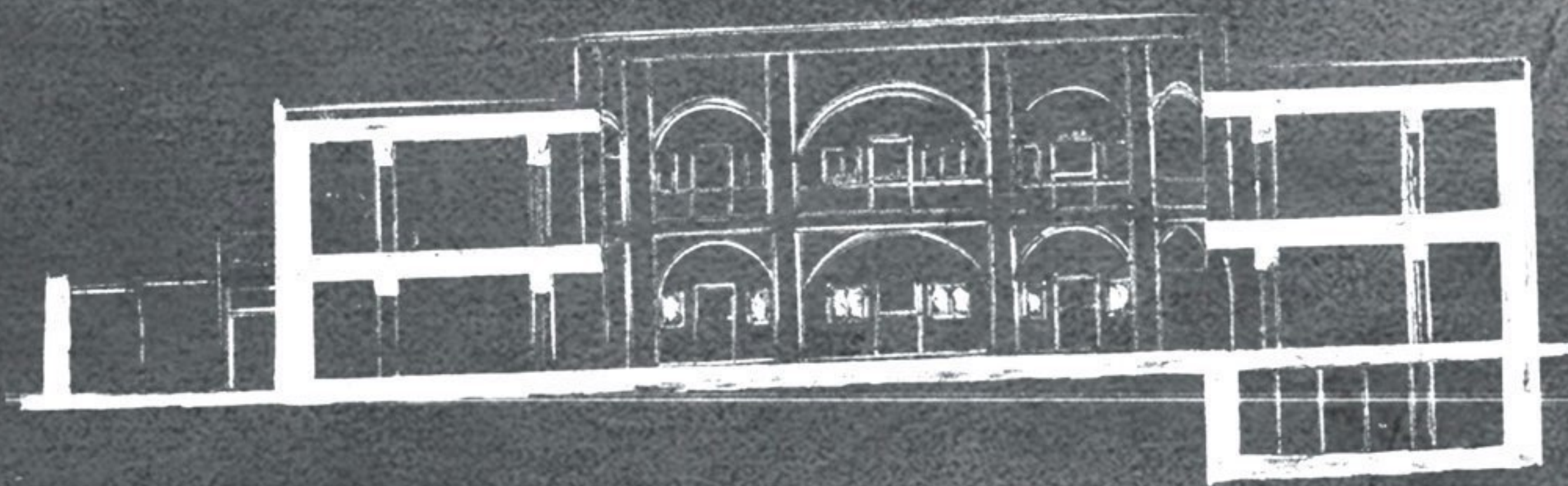
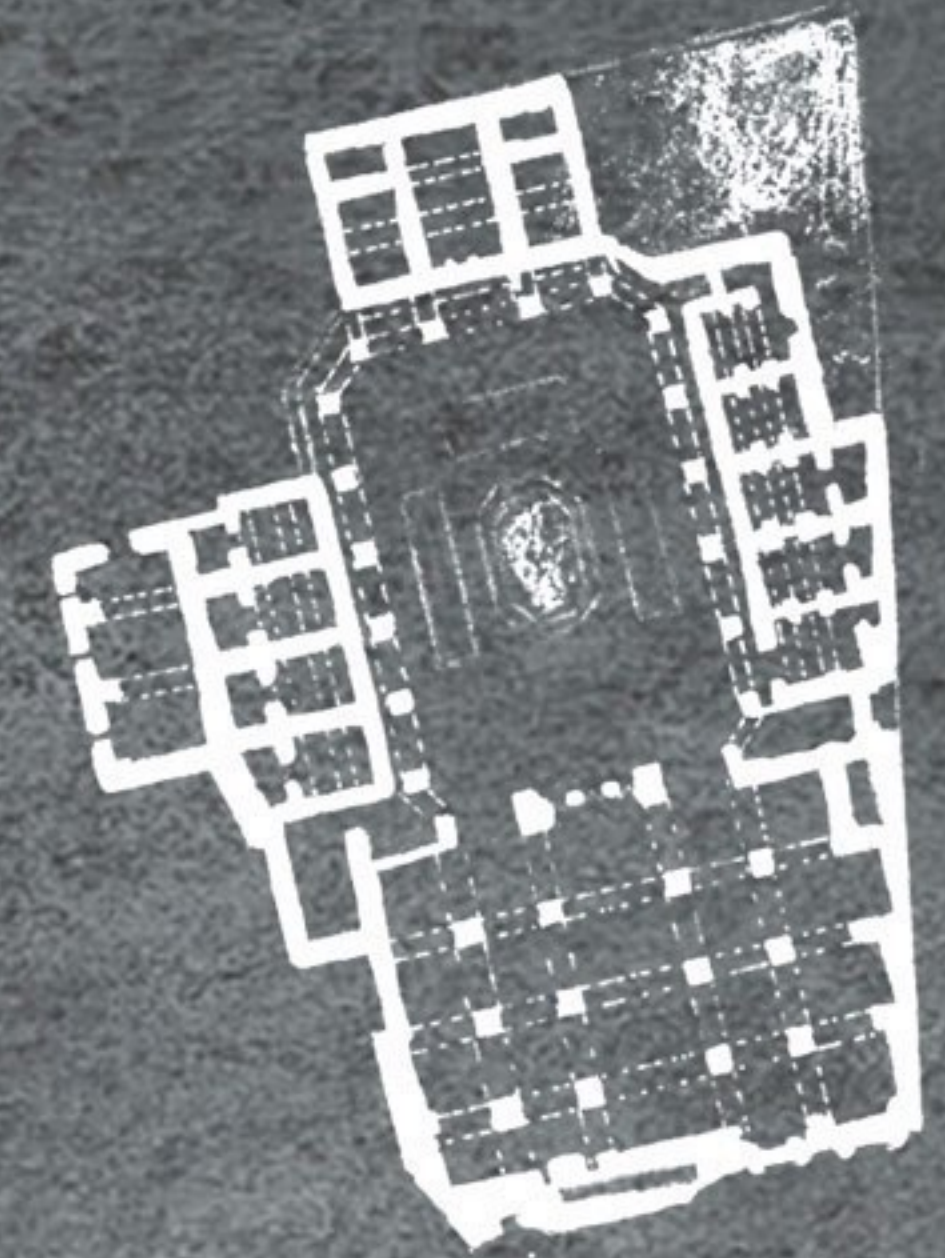
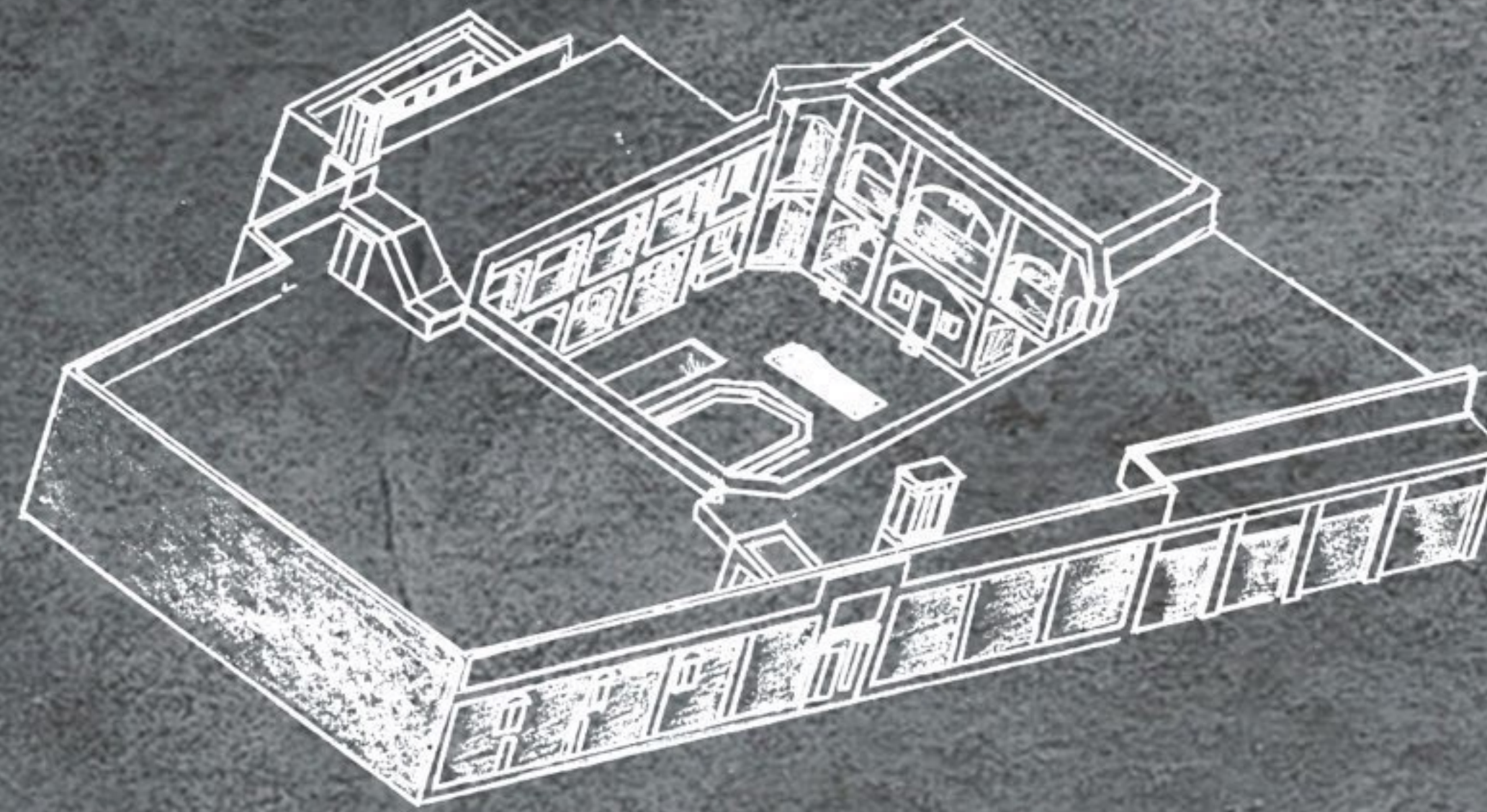


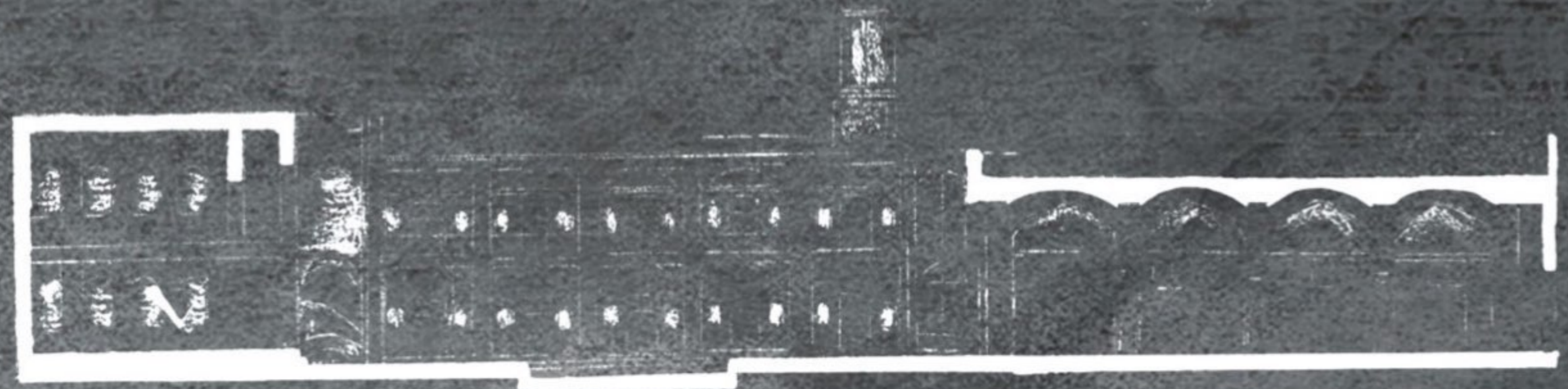
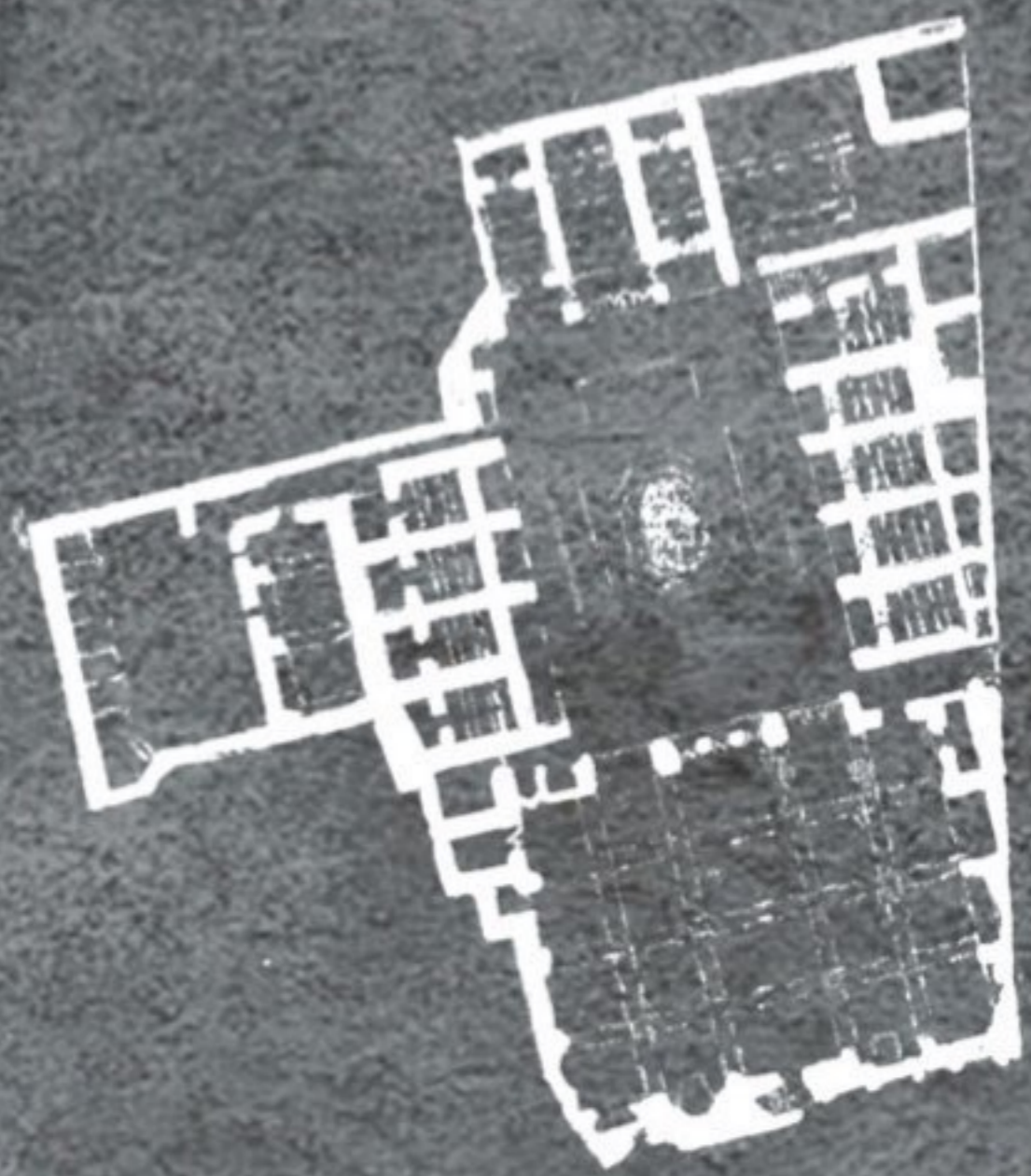
13

INTRODUCTON

SKETCH DESIGN  
School Project  
2004

# Project of Filsoof School





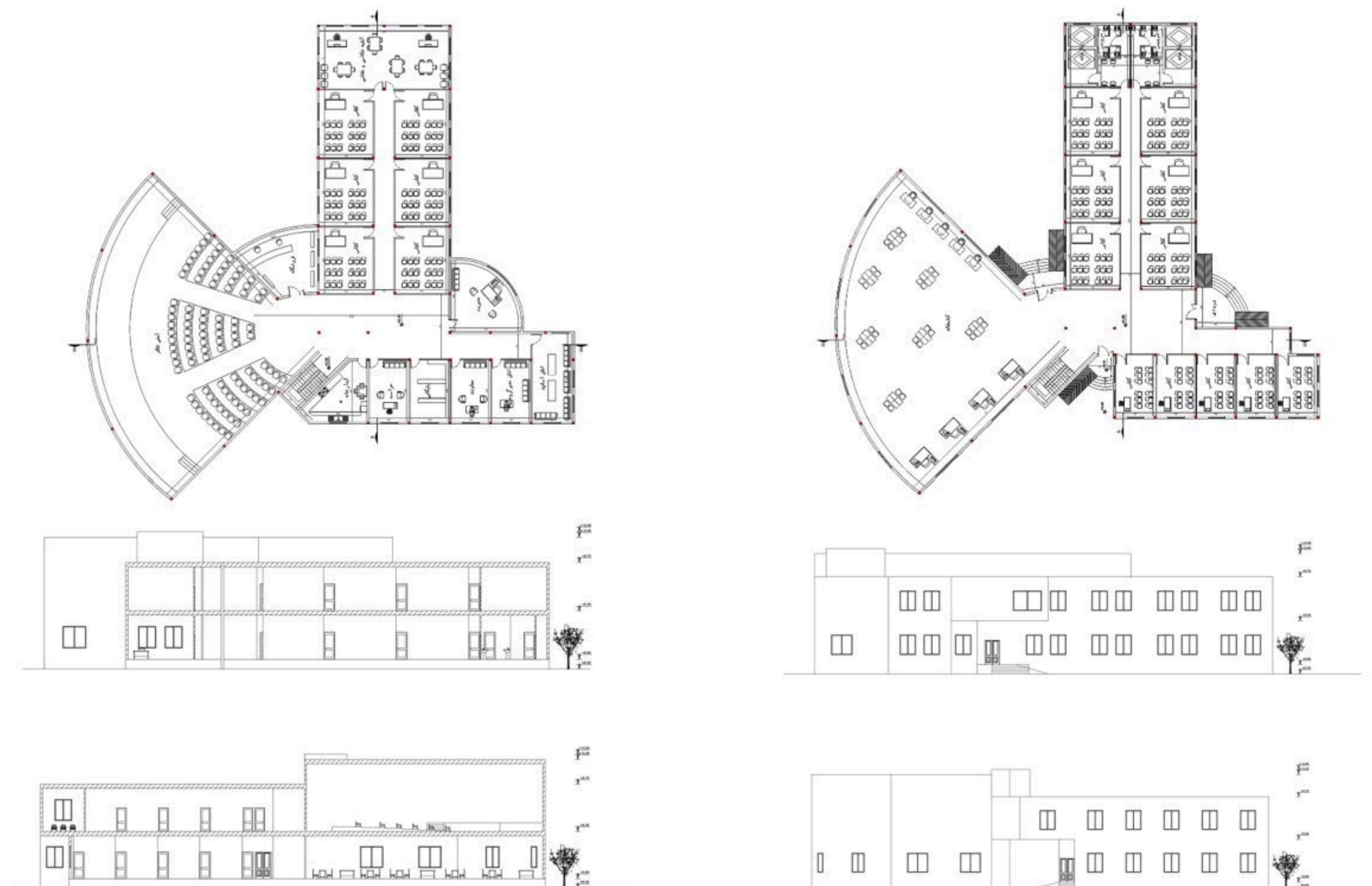
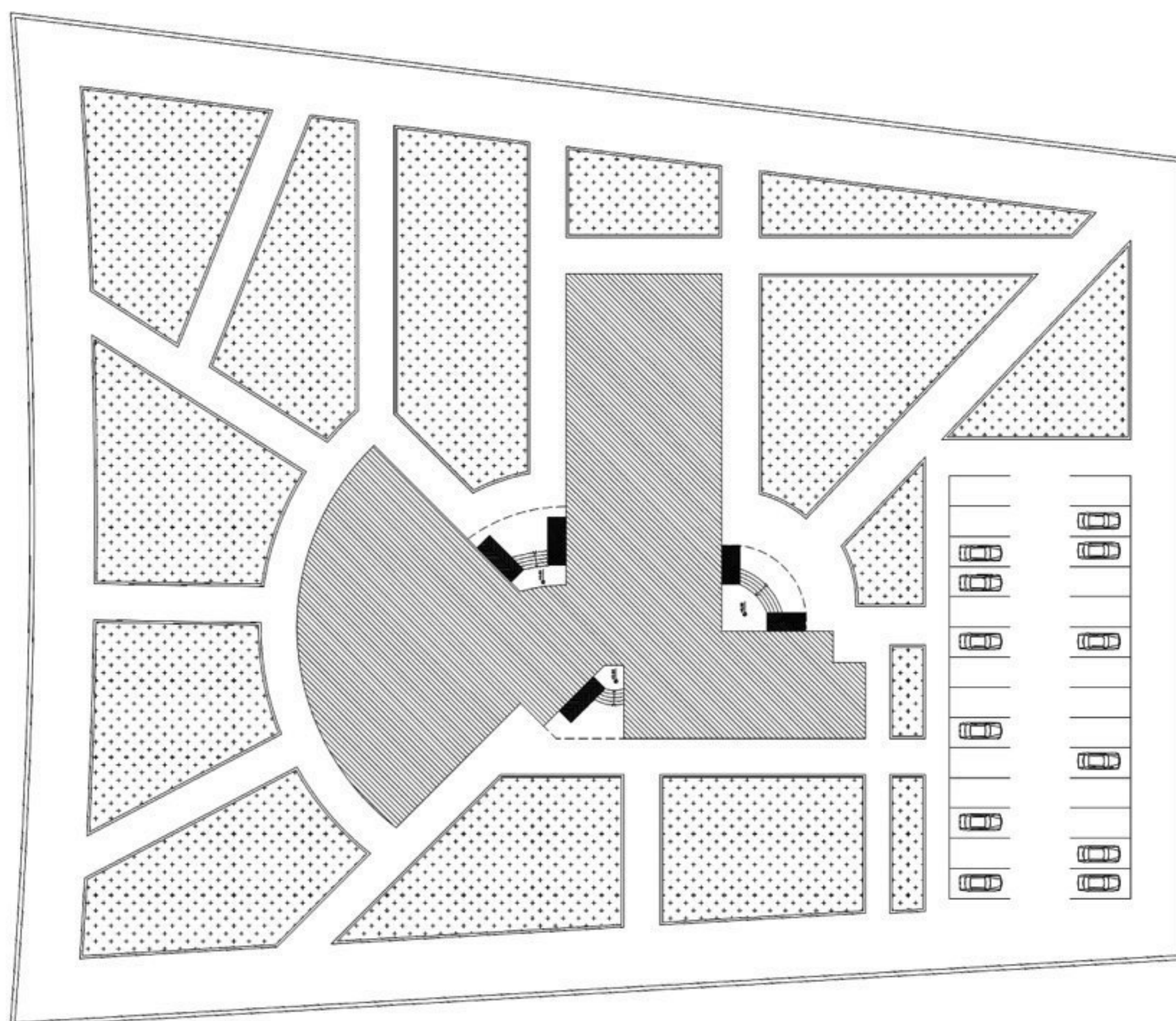
EDUCATION  
PROJECT

# Project of Faculty of Art

## The Four Elements

The four elements, Water, Wind, Soil & Fire have had an exclusive position in Iranian thoughts from old. And in fact Iranians knew that the material world consisted of these four elements and the manifestation of this thought was seen in life and people's architecture. These elements were the instances of nature and the nature had been mixed with Iranian life and the life was synchronized and associated with these elements.

The curve and circle forms in the architecture indicate elements of sun and fire. Also, to use the forms in motion indicate the elements of water and wind.



# C ONCEPT

## The building blocks of the world

The ancient Greek knew the four elements. They thought the light of sun a mixture of wind and fire and knew ice as water gained the hardness of stone. Avicenna claimed in his book "Book of Law" that two elements, i.e, soil and water, are the builders of organs the body and two light elements, i.e, are builders of the spirit. Although this point of view seems to be very common, they have deep effects on our present understanding from the world. One of these effects is to consider the status of the material. The concept of material and energy can be gained through belief in the four elements; the soil represents the solid form. Water is the sign of liquid, and wind is the reminder of gas status and fire (sun) represents the plasma status, therefore, the four elements first reminds us of the status of the four elements.



...

## Inspired By The Form Of The Sun

The shape and function of the sun caused to create this form of design. Circle form in this project points out a concept of the sun and also the internal spaces were designed so that there is sufficient employment of sun light and the wind flows. In general speaking, the initial design of the construction was suggested from the natural statuses of light and sun and the four elements.

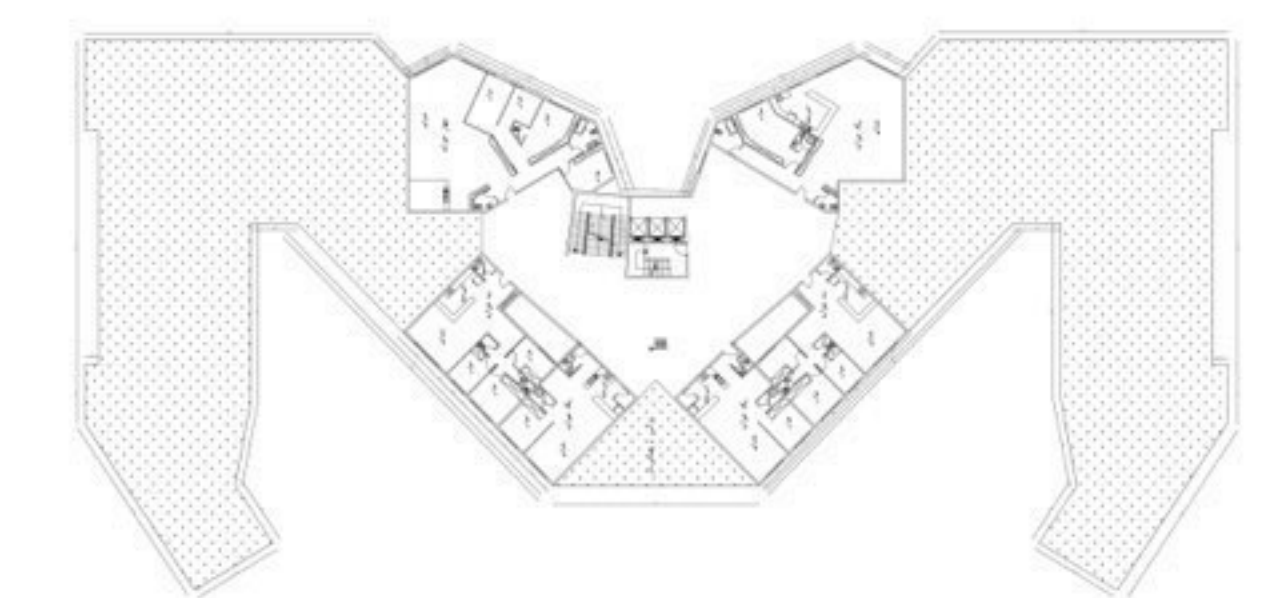
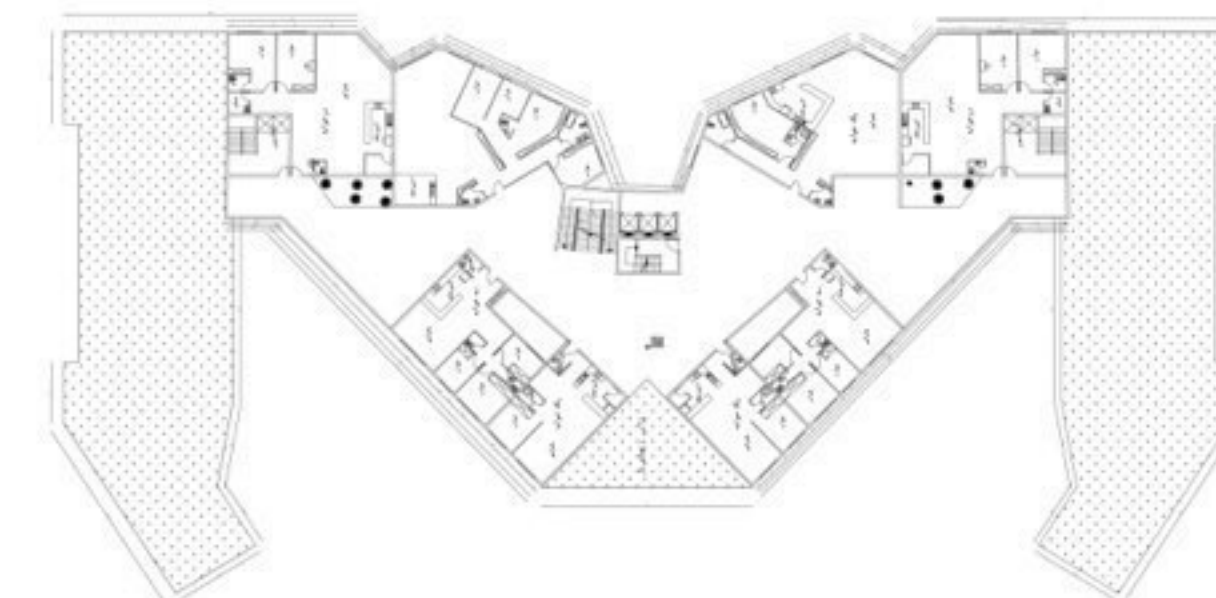
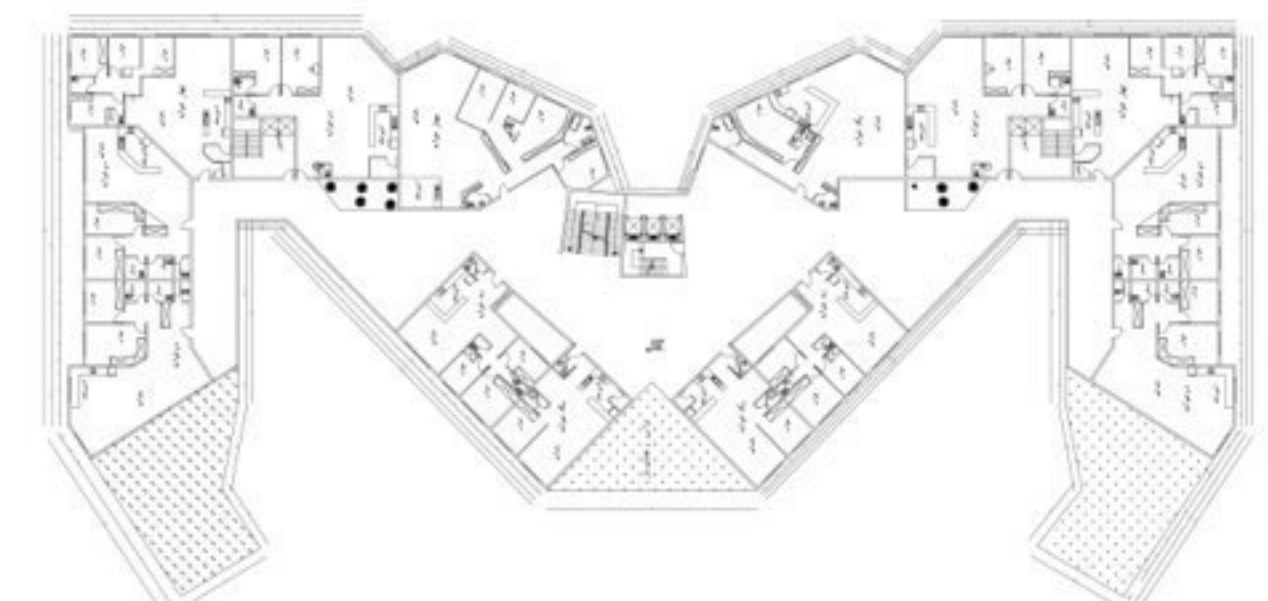
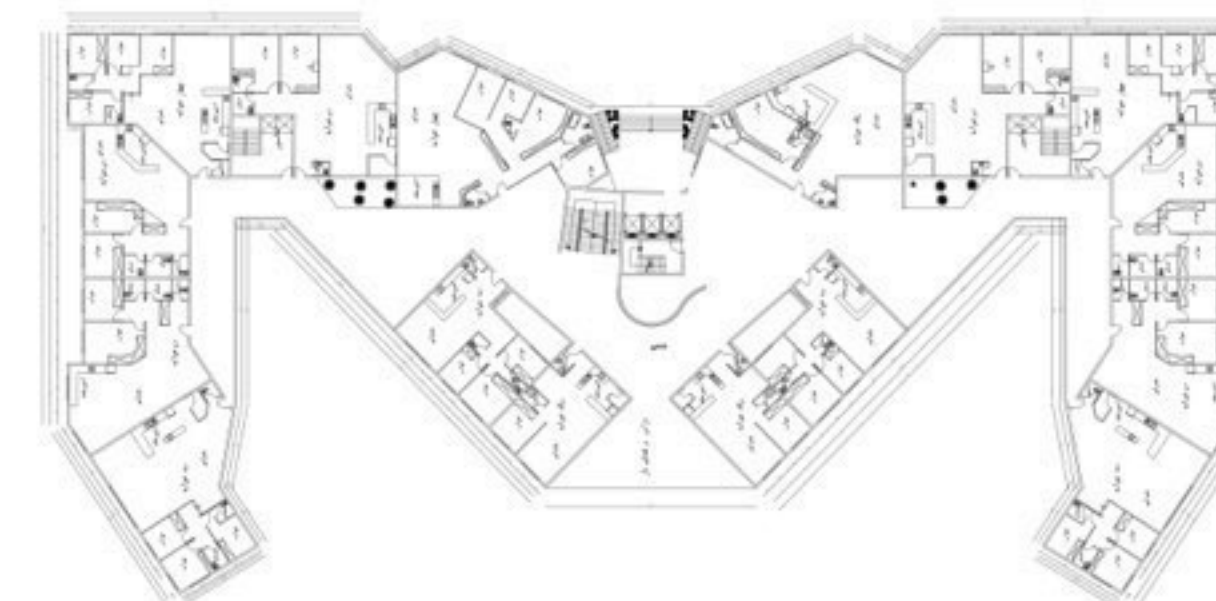
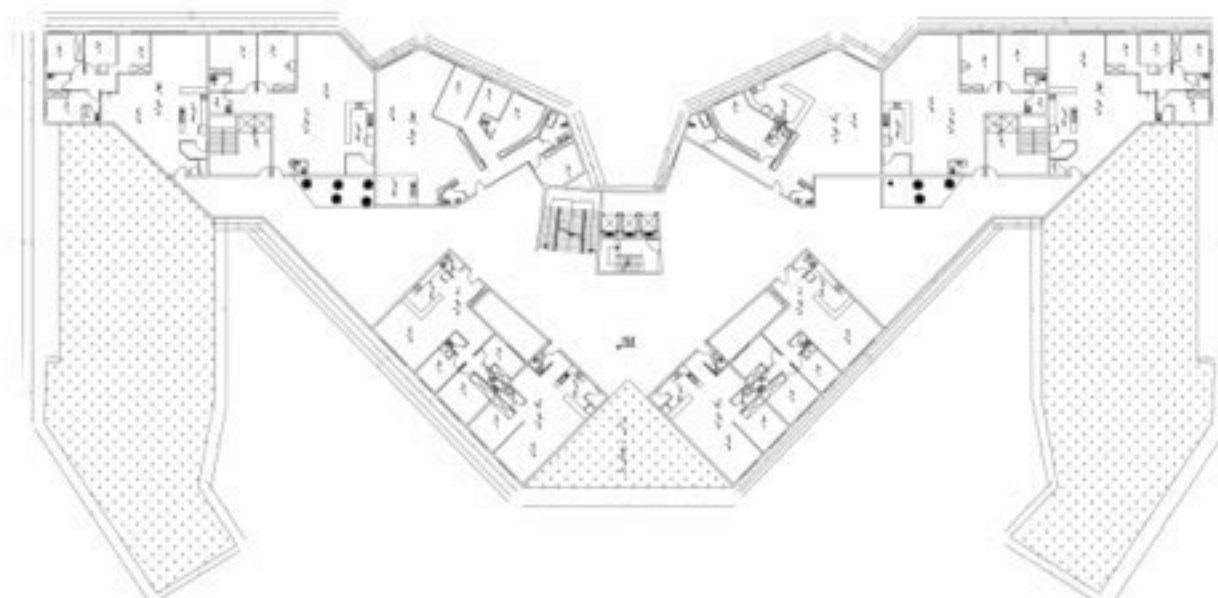
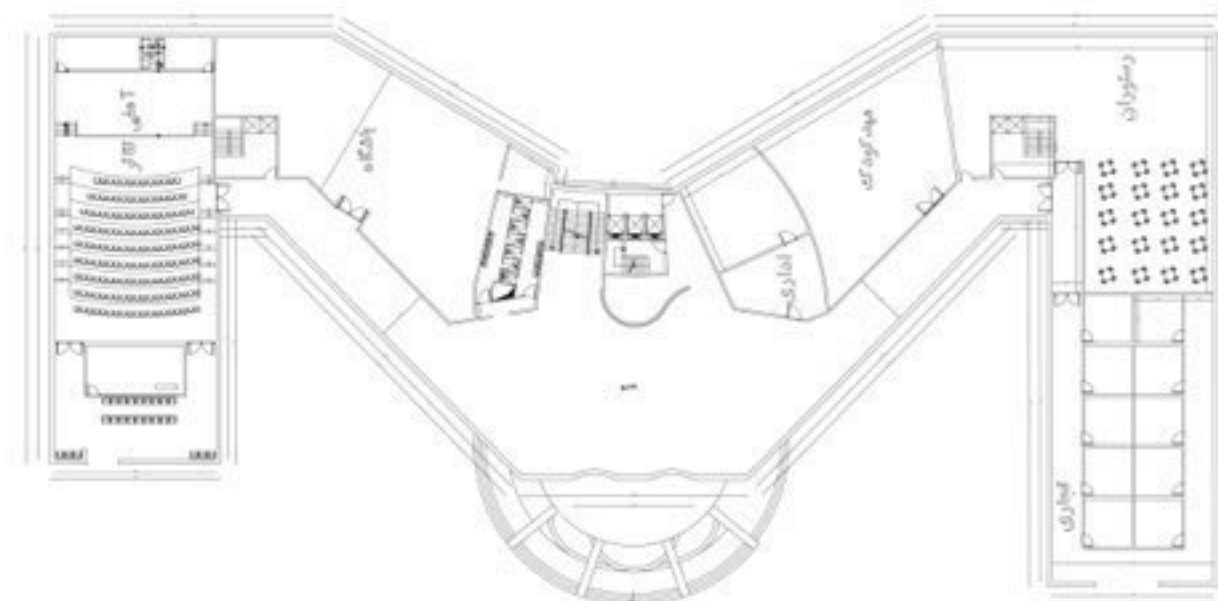
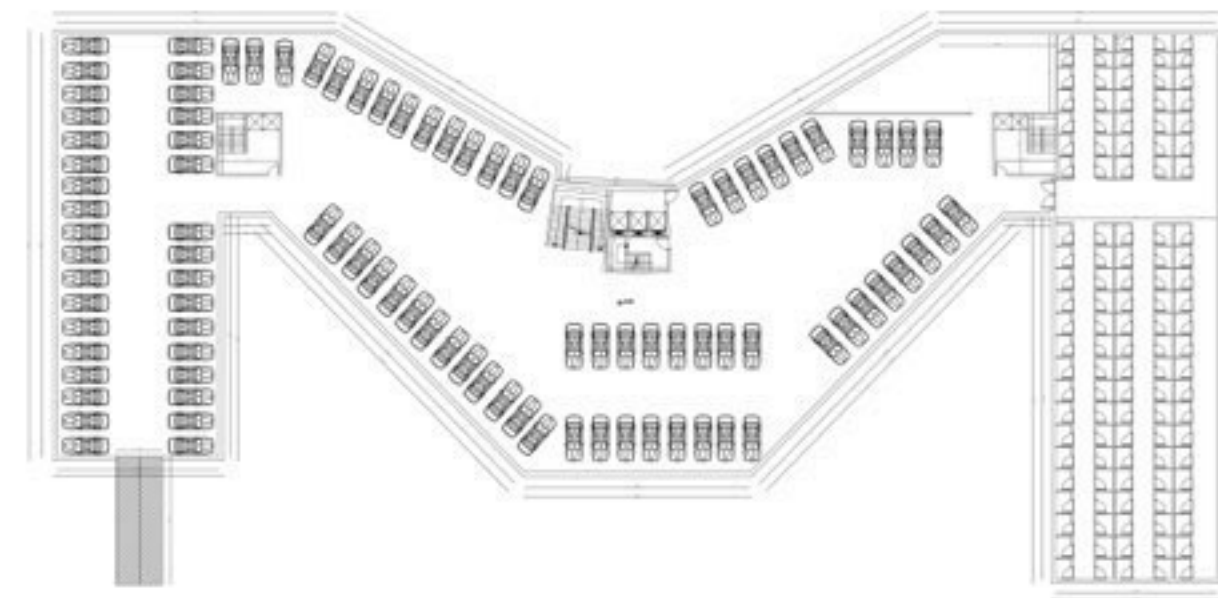
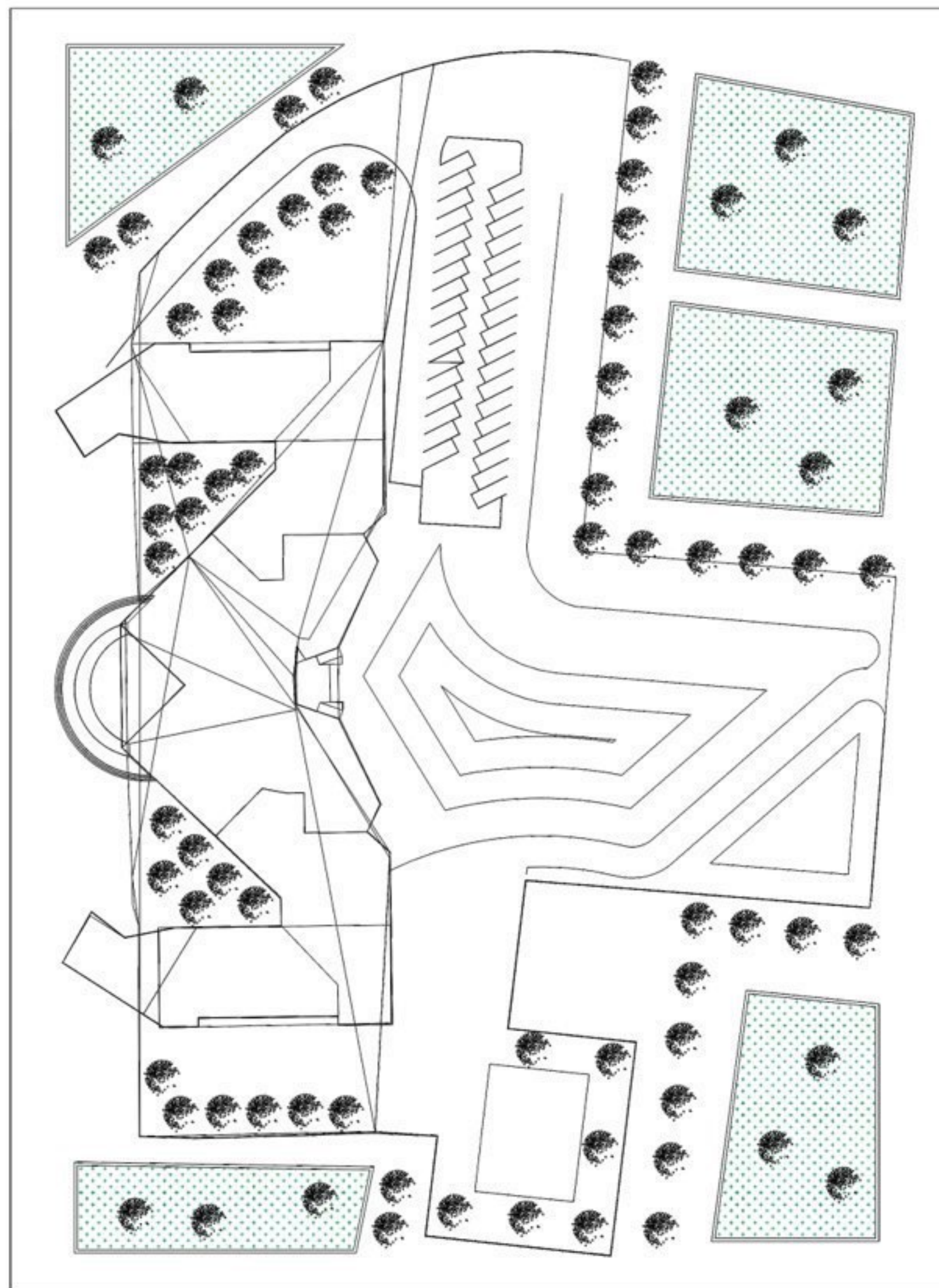
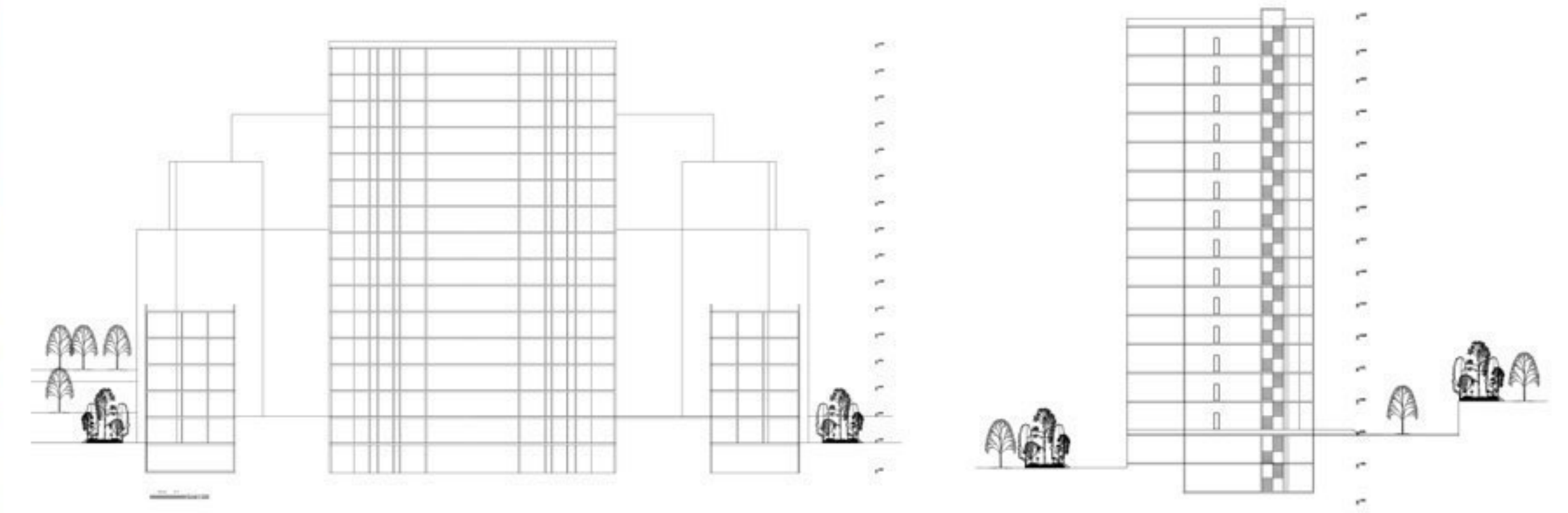


**THERAPEUTIC  
PROJECT**

# Residential Complex Project

## The Column Heads of Achaemenid

The powerful Achaemenid Empire was one the honorable Iranian civilizations and governments that in its period expanded its country's territory in a unique manner and figured out one of the biggest kingdoms in the world.



# CONCEPT

The column head of two head cow of Apadana Palace is a part of the Great Darius's magnificent Apadana Palace in Shush. This big column head is of the thirty sixth ceiling supporting column of the Great Darius's Apadana Palace and indicated the Achaemenid architecture being created from various cultures and civilizations and in an integrated and related manner. These thirty six columns, each one has 21 meter height that the base of each one is square that the name of the king was carved on it. The age of this Palace and the columns dates back to 510 B.C. The column has been the symbol of power of the Achaemenid architecture. In general, the element of column in architecture is the element of firmness and power which induce resistance and firmness in viewer.

Also, due to belief that most people in the countries had about the birth and much richness of cow under the Achaemenid Empire the cow column head was used in most Palaces of Takhte Jamshid...

## **Sustainable Architecture:**

The sustainable architecture is an architecture style looking for minimizing the negative effects of environment of constructions through increase of employment and moderation in using materials, energy, space of general development and ecosystem. The sustainable architecture uses from a conscious approach about energy and preservation of environment in a carried out design. The thought of sustainability or ecological design is assurance of employing any resources in a manner having no much harmful effects on humans' health or cause to lose all other resources in long time.

This form creates a sense of special honor and firmness in viewer. The main concept of this design is the Achaemenid column heads so that inducing creates a sense of special honor and firmness in user and viewer. Moreover, in this project, certain elements like green doom having root in sustainable architecture were employed. The element of column is one of the most important elements in designing space architecture, also due to creating resistance and firmness and aesthetics case too. In the Achaemenid architecture, in Takhteh Jamshid Palace there are see several columns, the initial idea of cow head column of Takhteh Jamshid Palace is in the Achaemenid period.



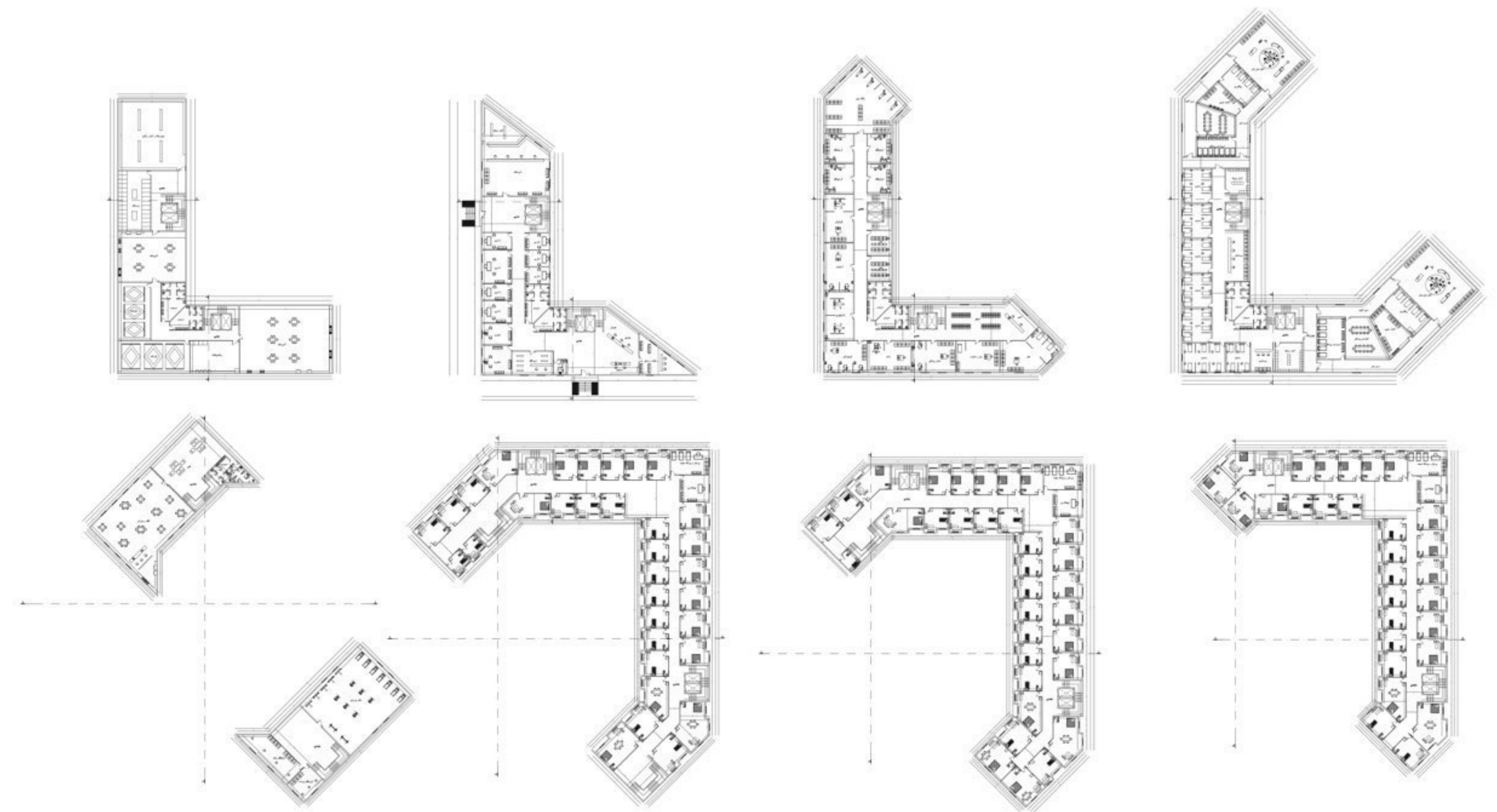
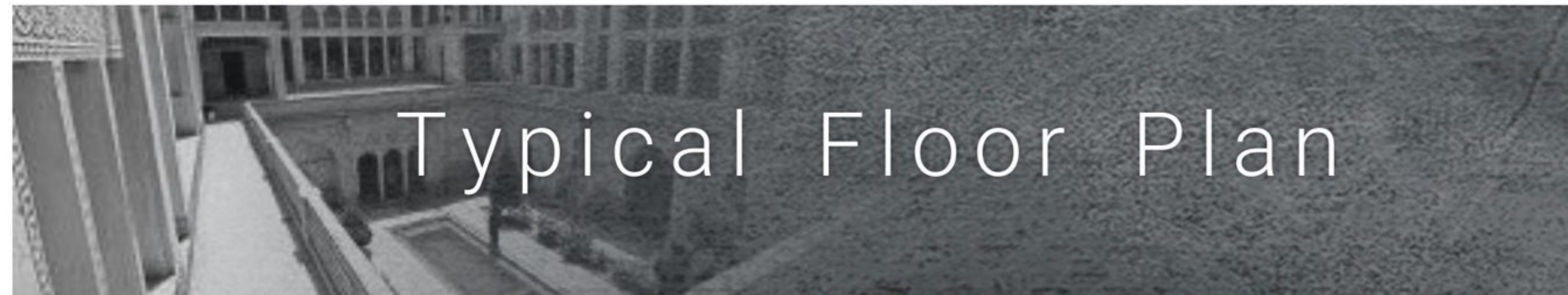
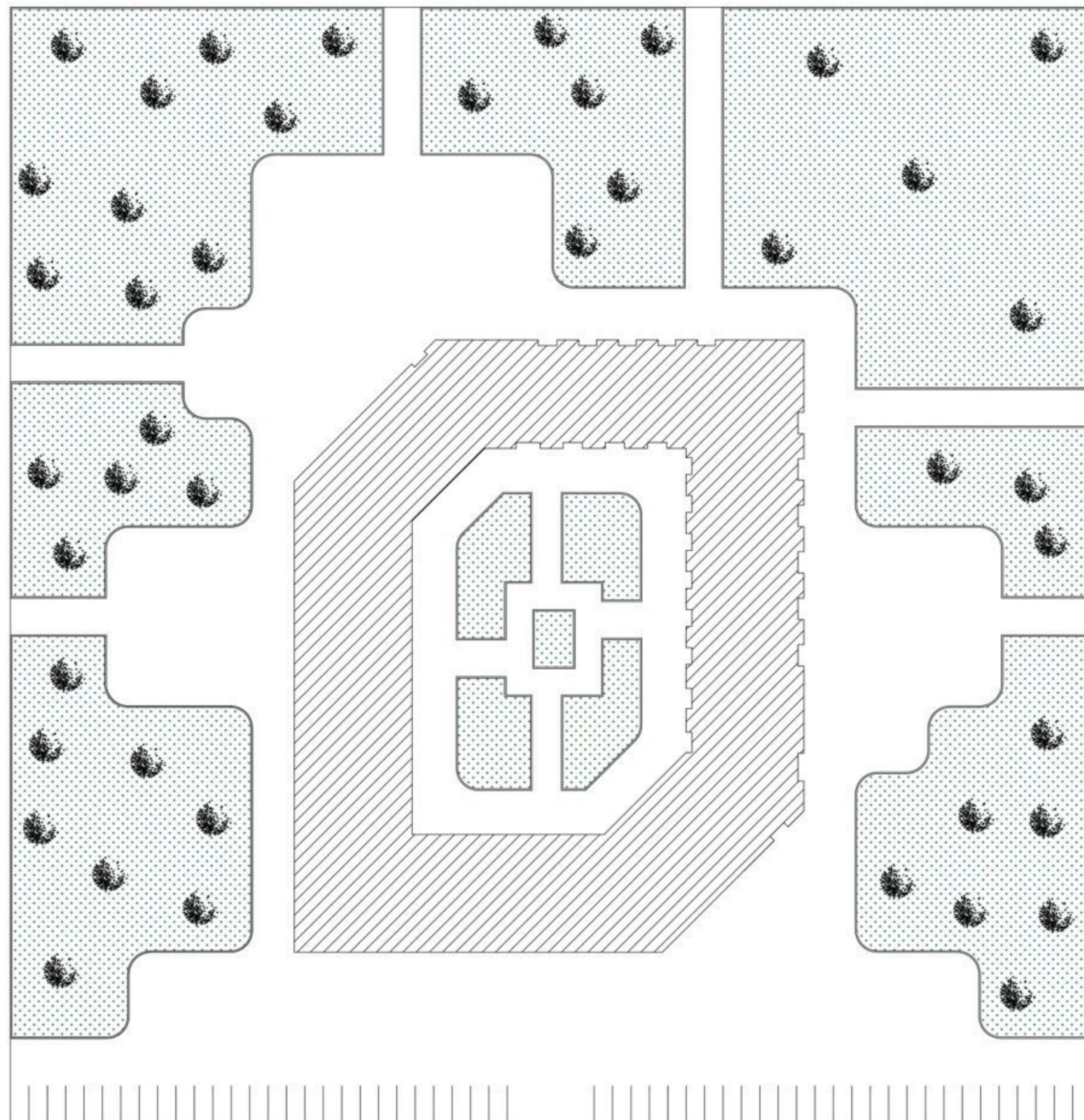
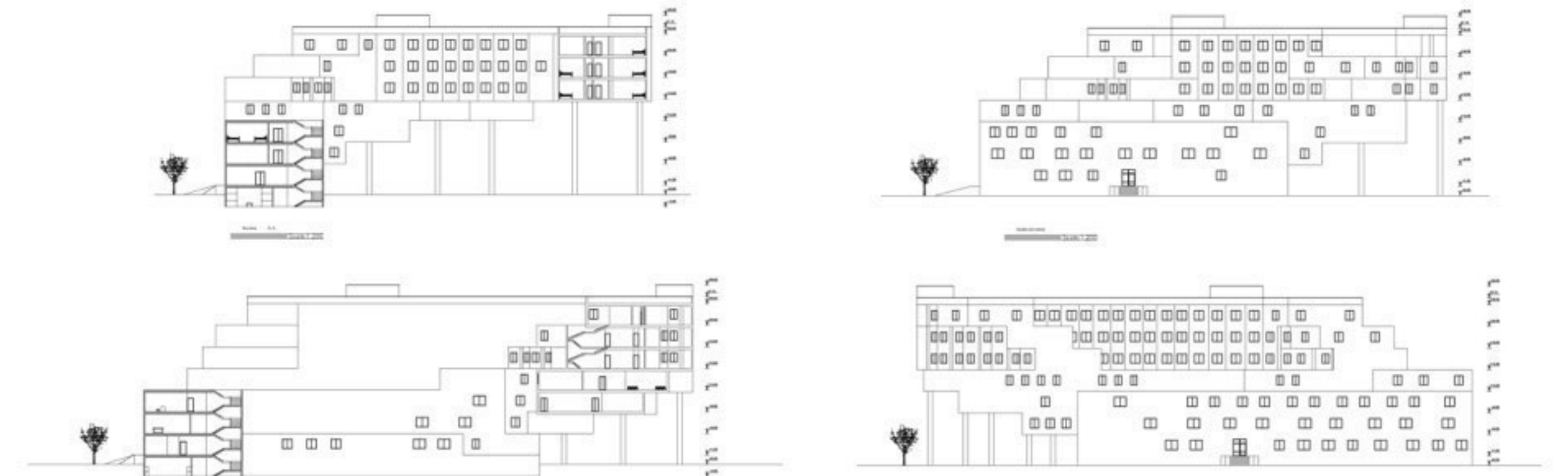


RESIDENTIAL  
PROJECT

# Hospital Hotel Project

## Ziggurat

In ancient civilizations of western Asia, a worshipping place was being built for Gods and the most important of them was Ziggurat and its meaning was to go up to the sky. Ziggurat means to lift and to rise. Ziggurat is a mountainous construction that its area will be decreased by height increase. Architecture of mountainous constructions were common in lands lacking naturally mountain such as region between Roodan and Iranian Plateau.



# CONCEPT

Ziggurars were constructions being built like stairs. Like a living creature being born from soil and rises toward the sky. Today, any structures like Ziggurat are seen in modern architecture.

Ziggurat had floors separated having different accessible entrances and to enter to any floor was clear from its entrance gate. From width view, these constructions became smaller and smaller from down to up and in the highest point there was a temple. There were stairs to reach the temple.

Central Courtyard:

On the basis of remained signs from historically ancient houses that existed from sixth millennium BC onwards in most parts of Iran. Any house consisted of two parts, one was built commonly with a constructed and surround space and the other one was open space, because the weather during the year in central and south parts of Iran was in a position that a part of the year was cold and half of the other was warm and temperate and a part of activities relevant to residence was accomplished in open space in apt times of the year. Whereas the role of geographical and environmental phenomena has been clear in open space and courtyard of the houses, but we can think of cultural factors as the main factors in shaping the courtyards of traditional houses and the goal of implementing this project in the first step is to consider the geographical factors in shaping the open space of any courtyards of the houses and in the second step to present a typical categorization of various courtyards of the houses. Today in certain modern buildings some element of central courtyard is seen.

The main idea of this project is to construct a courtyard in the project.

Of other employed ideas in this project is to use Ziggurat like volume with stairs volume and employing this form in this project will merge the Ziggurat ancient shape with modern architecture either. In addition, to take advantage of came out and alcove walls in this project caused to employ the maximum surfaces from sun shine making the building to reach the most likely efficiency. In the central courtyard part of this project any green space was used that in addition to the aesthetics discussion will create expectation space.



# MY 3DS MAX



# PROJECTS



# MY 3DS MAX



# PROJECTS



11-12



### PROFILE

I was born in August 1987 and since childhood I was deeply passionate about art and technology. I pursued my education at Bachelor's Level and have been a member of Iranian construction Engineering Association for 3 years.

### CONTACT

PHONE:

+989199706502

ADDRESS:

No1, Valiasr Complex, Saedi St  
Tehran-Iran

EMAIL: aida.bagheriarch@gmail.com

### HOBBIES:

Painting

music

Urban Design

Reading

PERSONAL TRAITS:

Professional

Motivated

Dependable

Hard-working

Energetic

Organized

Flexible

### Language:

English: upper Intermediate

Arabic: Intermediate

Farsi: Native

# AYDA BAGHERI

A r c h i t e c t

### EDUCATION

Associate Degree

2006-2008

Cartography-Architecture

Sari University

Bachelor Degree

2013-2015

Architecture

Islamic Azad University

### WORK EXPERIENCE

Javid Sazeh

2007-2008

- Architectural mapping design

City Electronic Services Office -Affiliated to City hall

2008-2019

- Control of Architectural mapping

Map review in line with national Urban planning rules and regulations

- Supervising Engineer

Monitoring by the national Engineering Association to ensure map and structure matching







**AYDA BAGHERI** | Architectural Designer | **Resume Design** | 2021